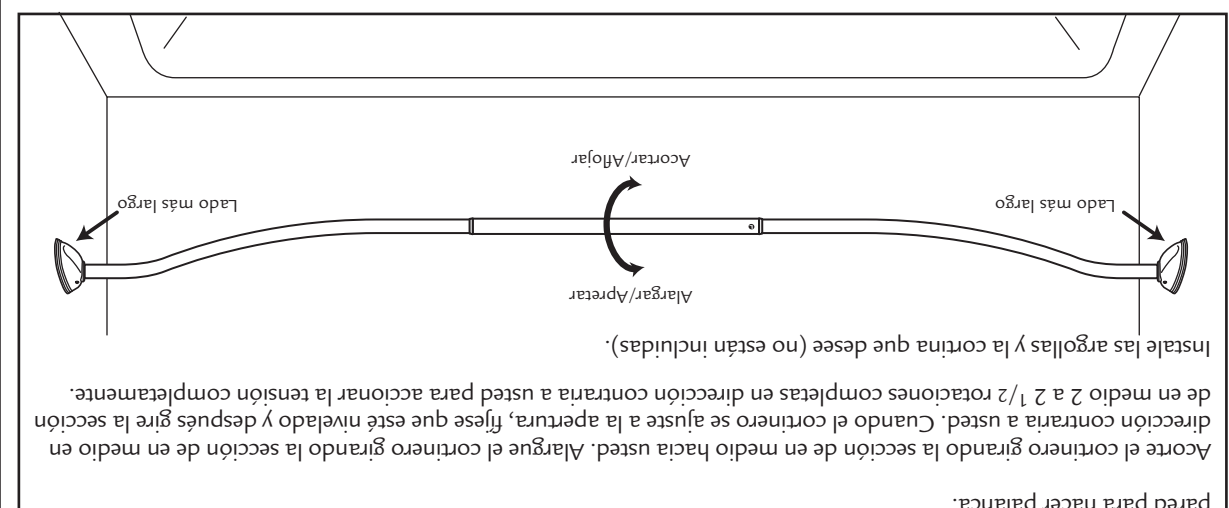
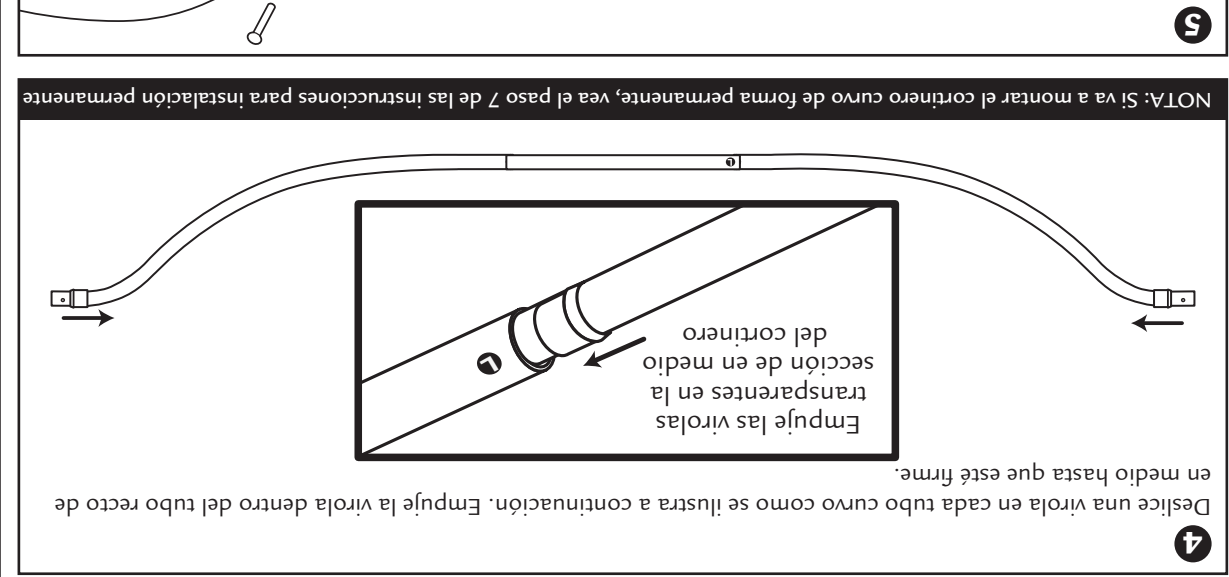
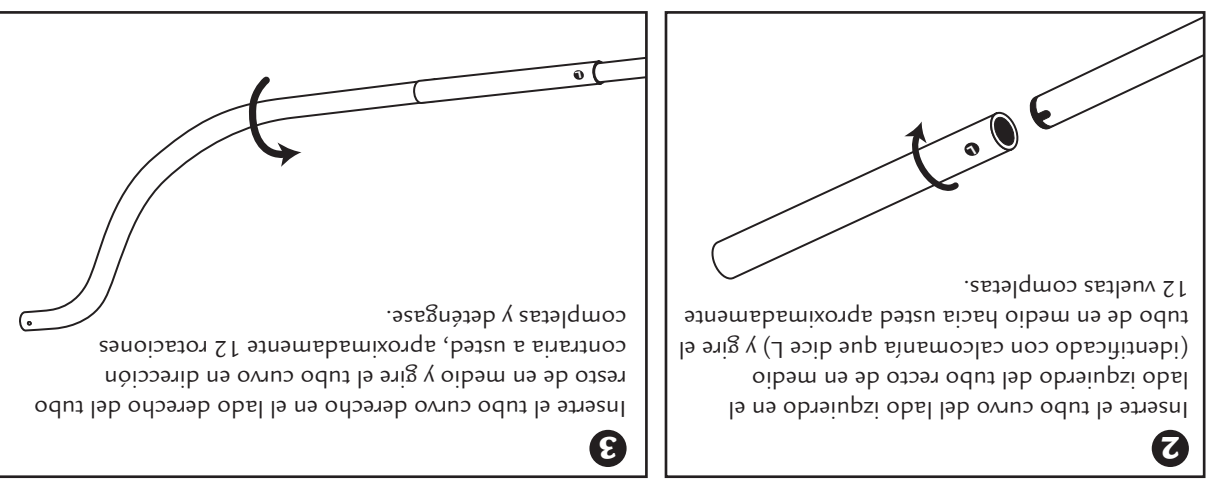
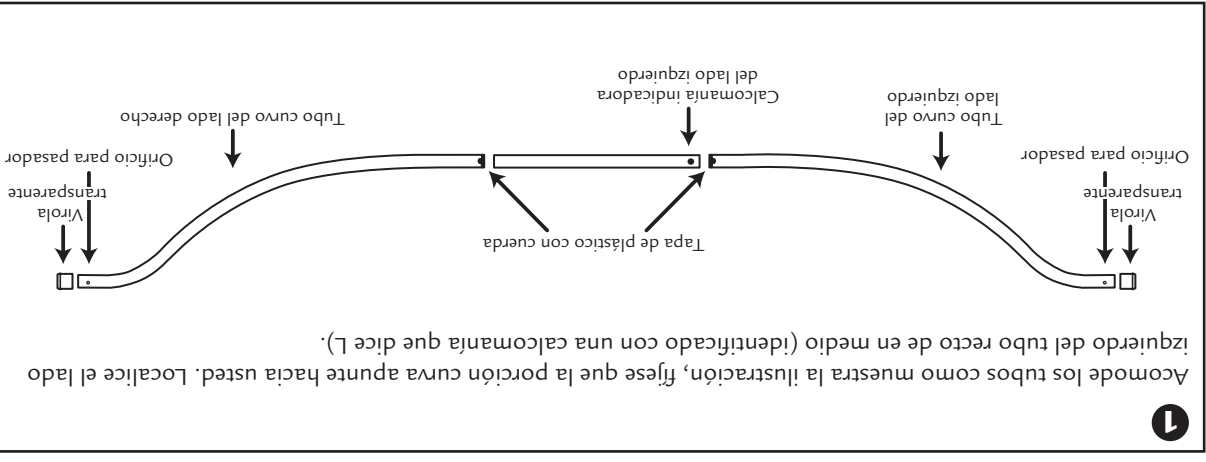
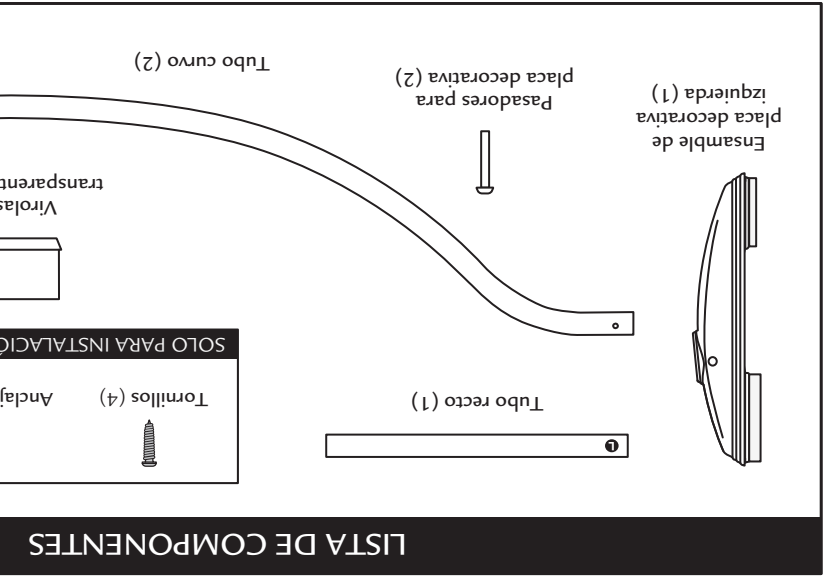


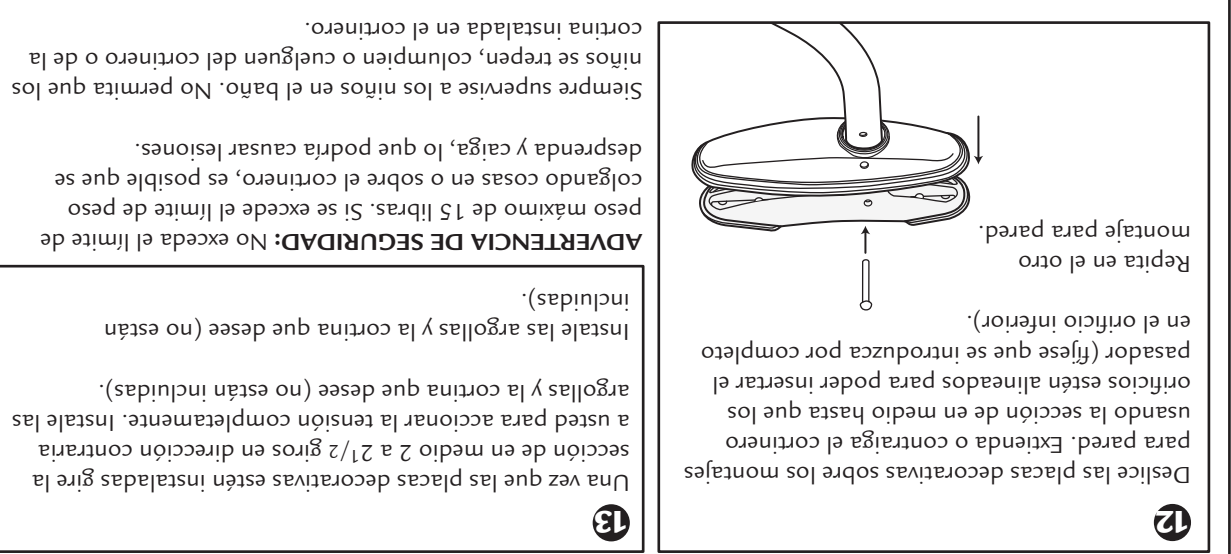
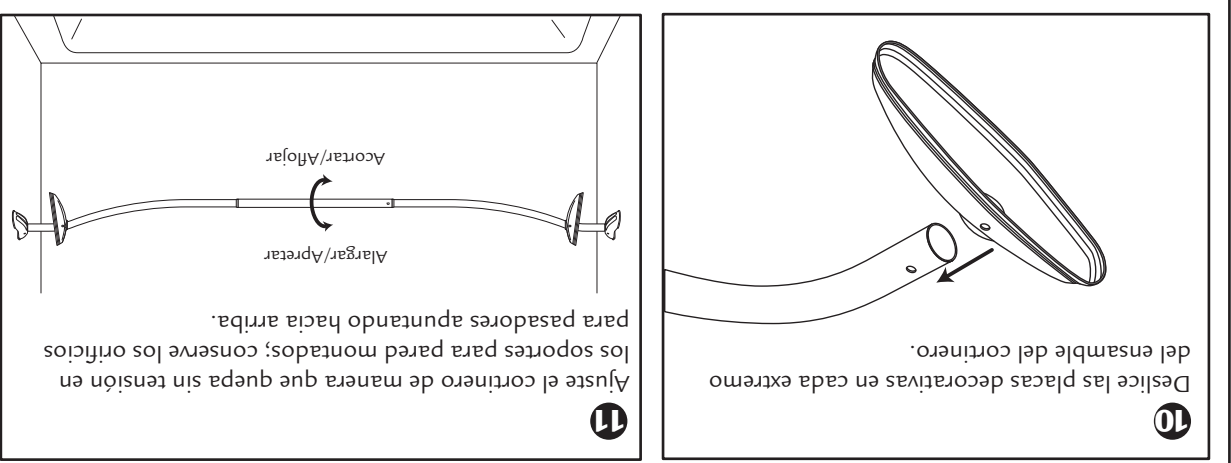
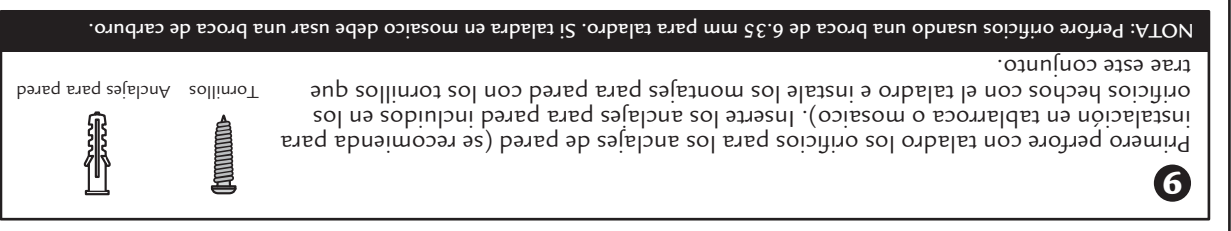
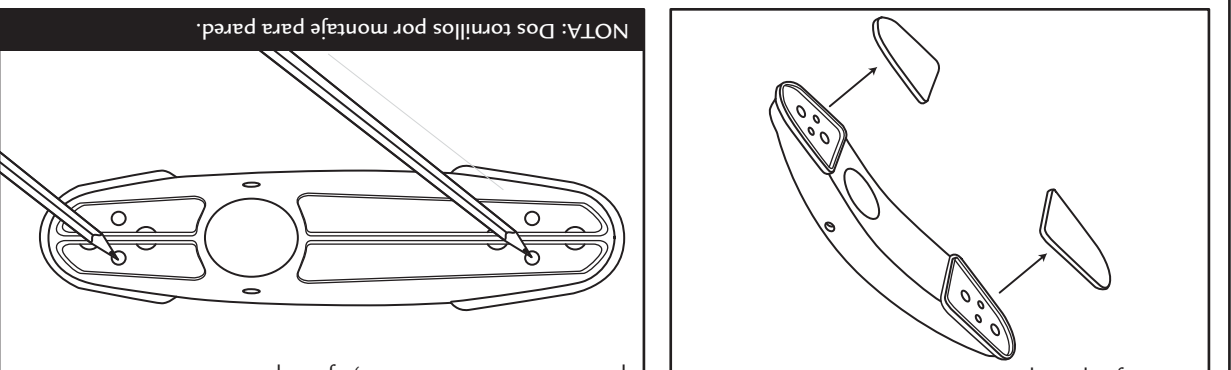
Instrucciones para instalación sin herramientas del cortinero curvo

- Instrucciones para una instalación fácil:
- Este cortinero para ducha se ajusta para su instalación en áreas para una de hasta 66 pulg. (167 cm)
 - Identifique y revise los componentes antes del armado
 - Cierre el drenaje durante la instalación para evitar la pérdida de piezas pequeñas
 - Instale en una superficie limpia y seca



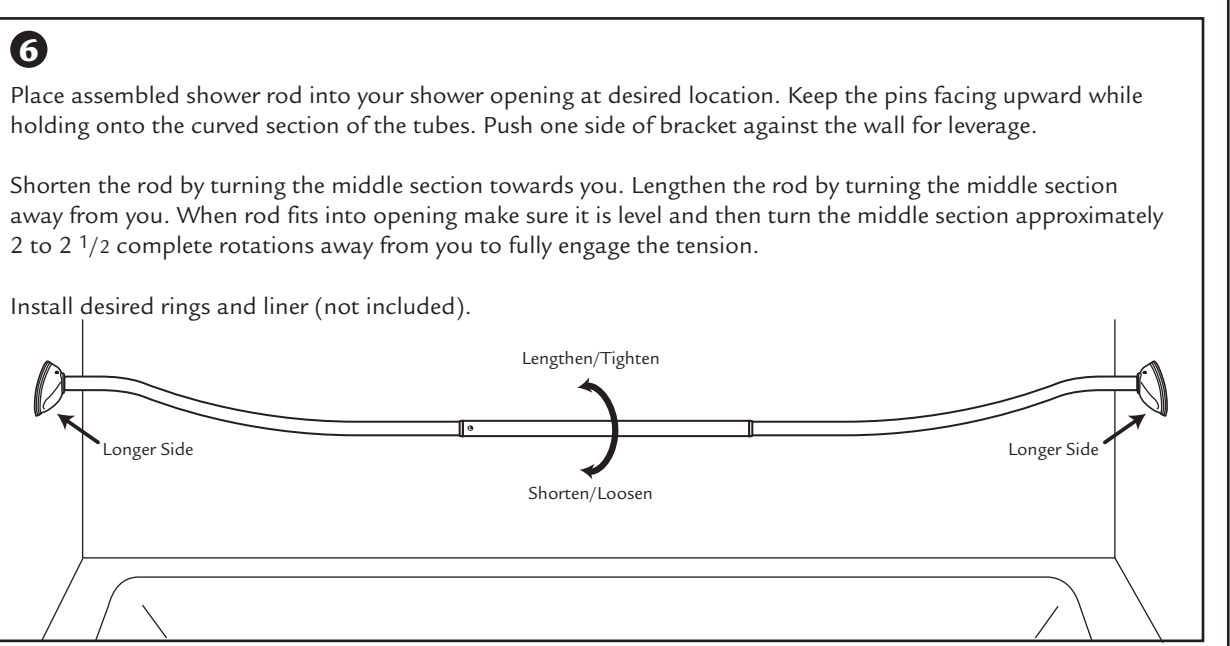
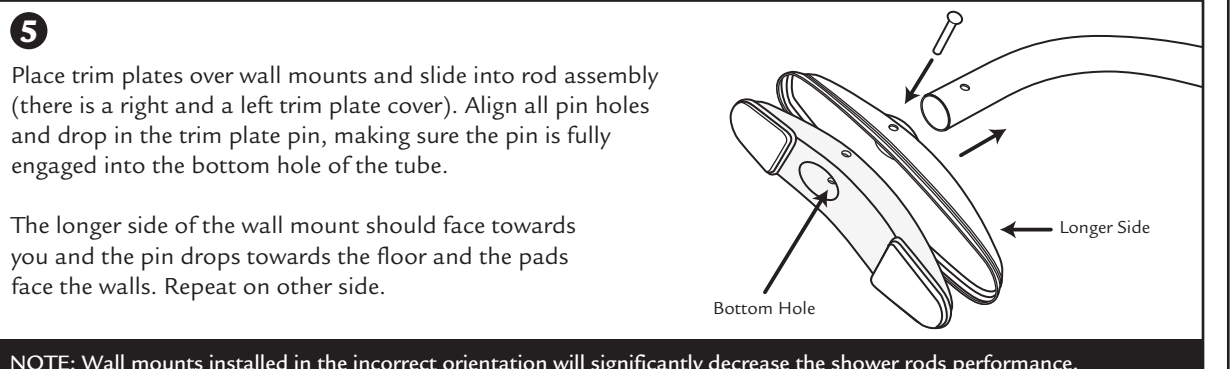
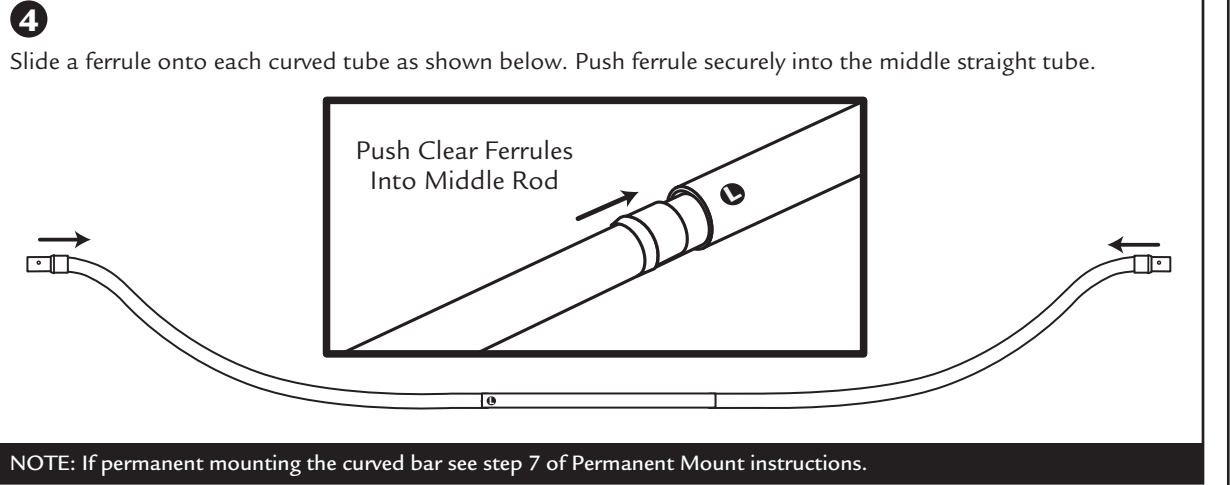
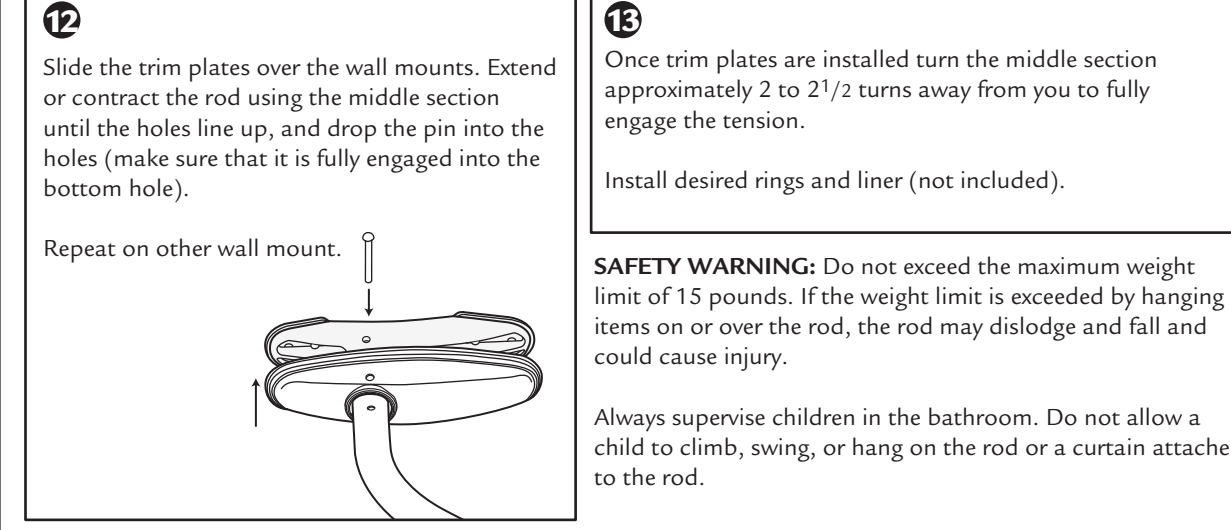
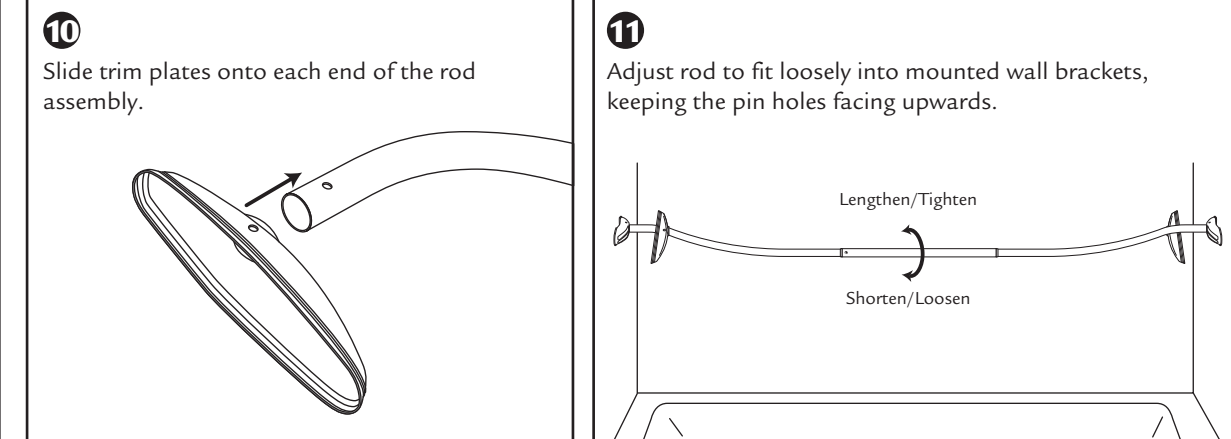
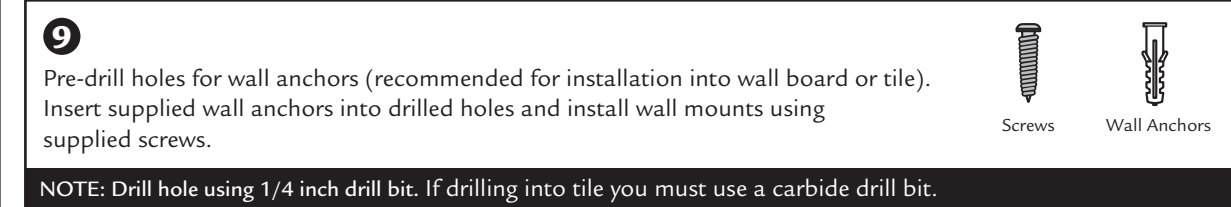
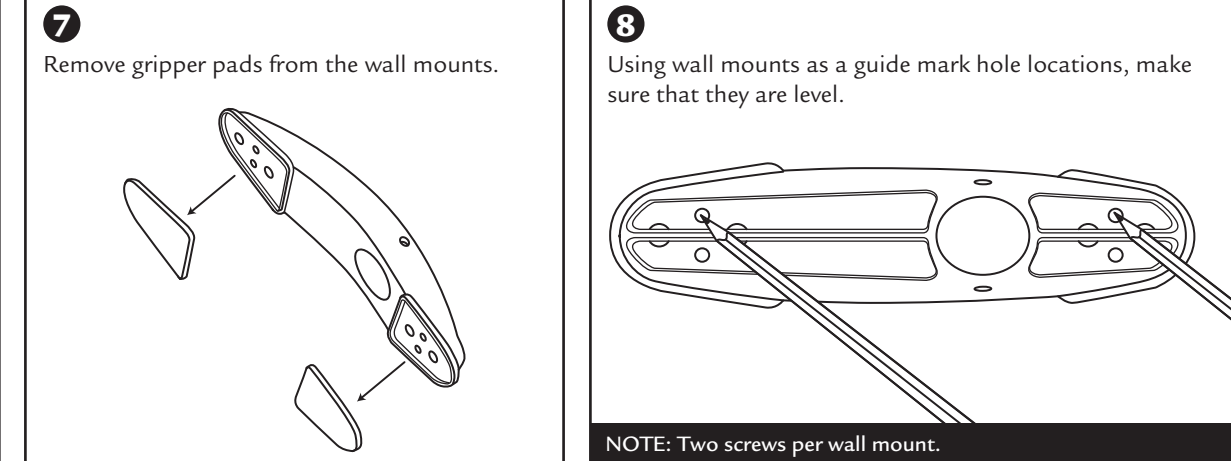
Opción de instalación de montaje permanente

NOTA: Siga las instrucciones para el armado del cortinero de las instrucciones sin herramientas del cortinero curvo hasta el paso 4.

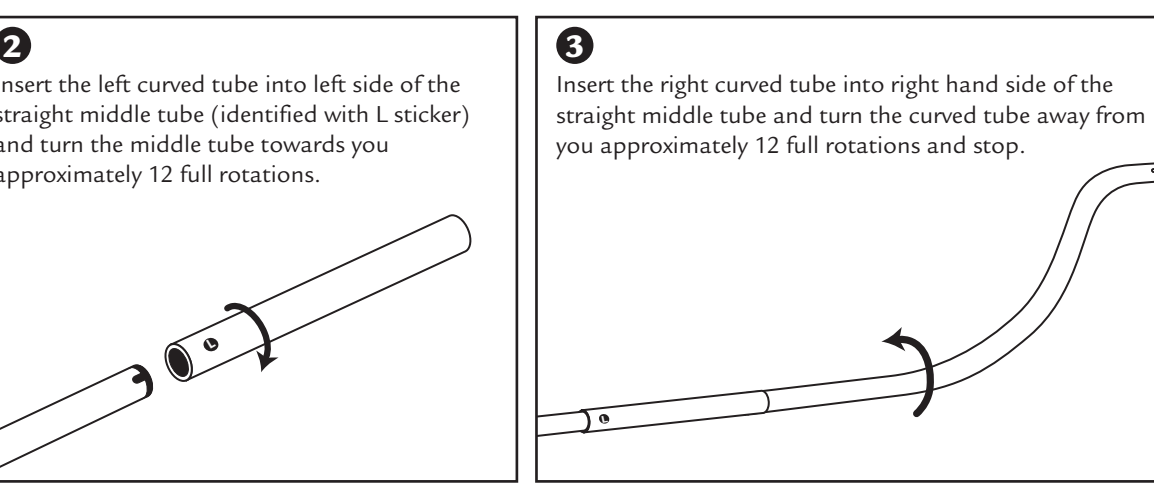
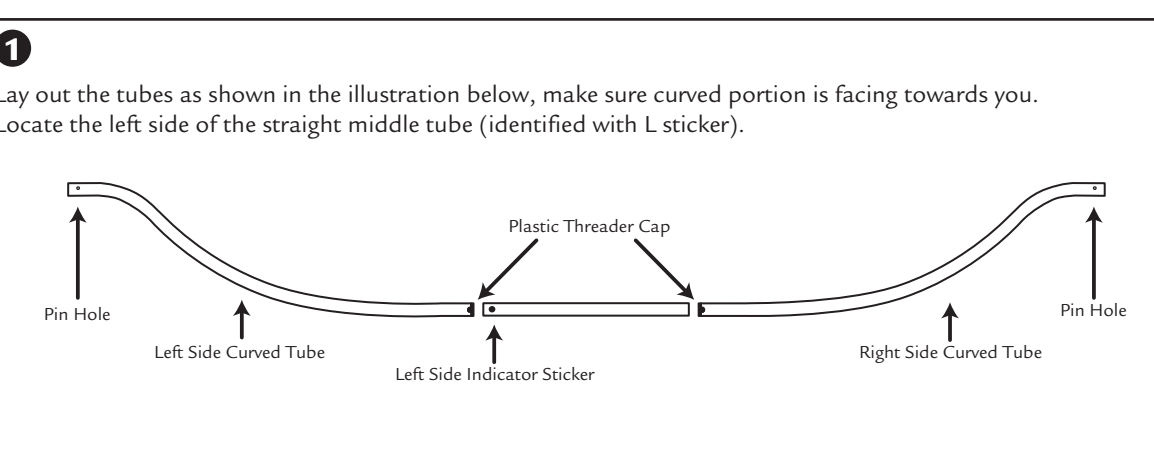
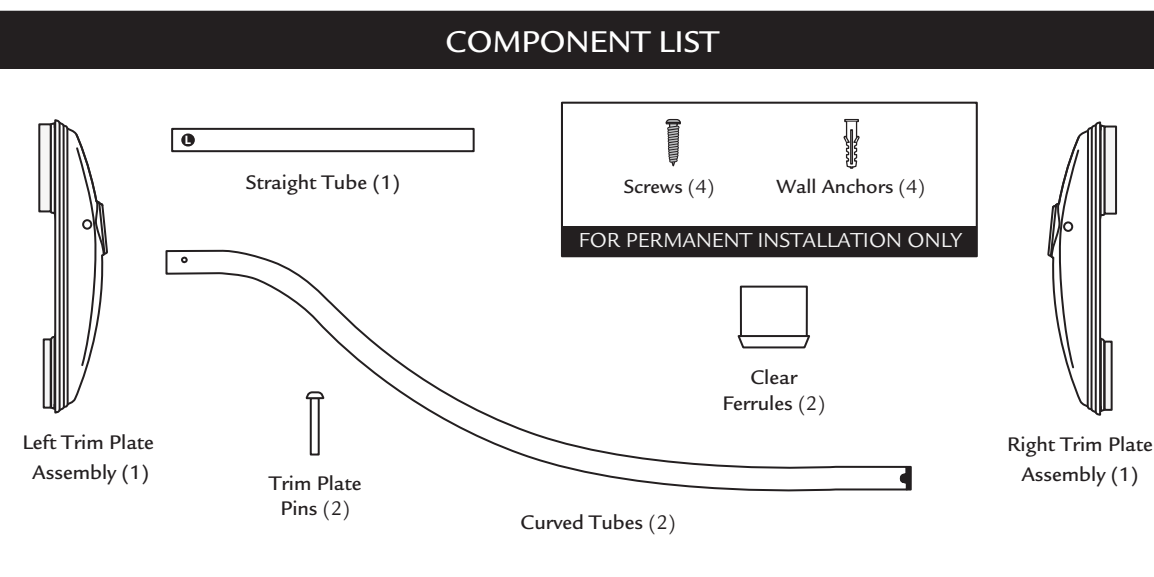


Permanent Mount Installation Option

NOTE: Follow Rod assembly instructions of the No Tools Curved Instructions up to step 4.



No Tools Curved Shower Rod Installation Instructions

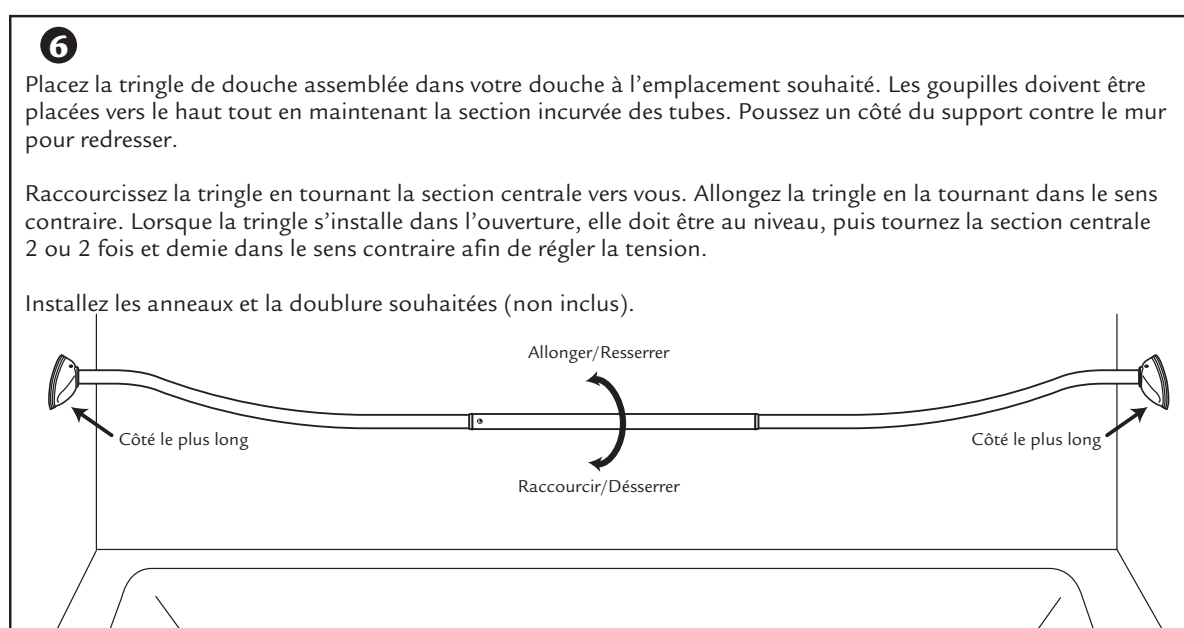
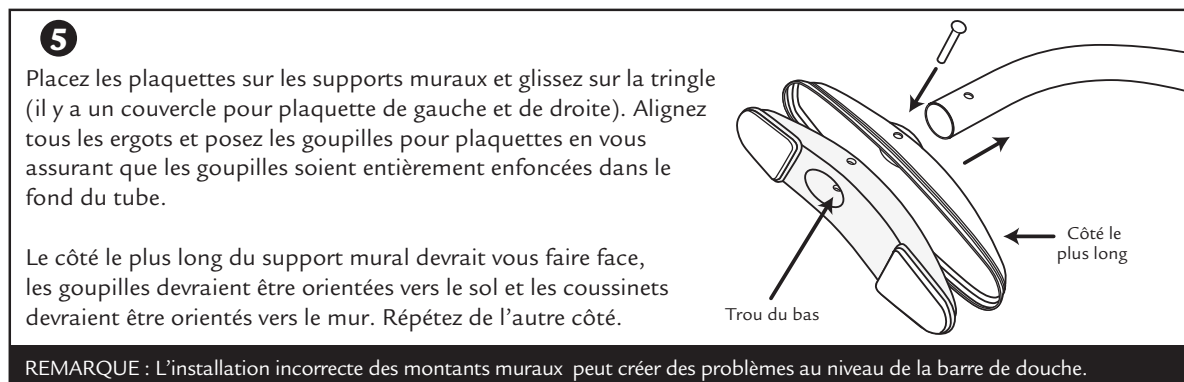
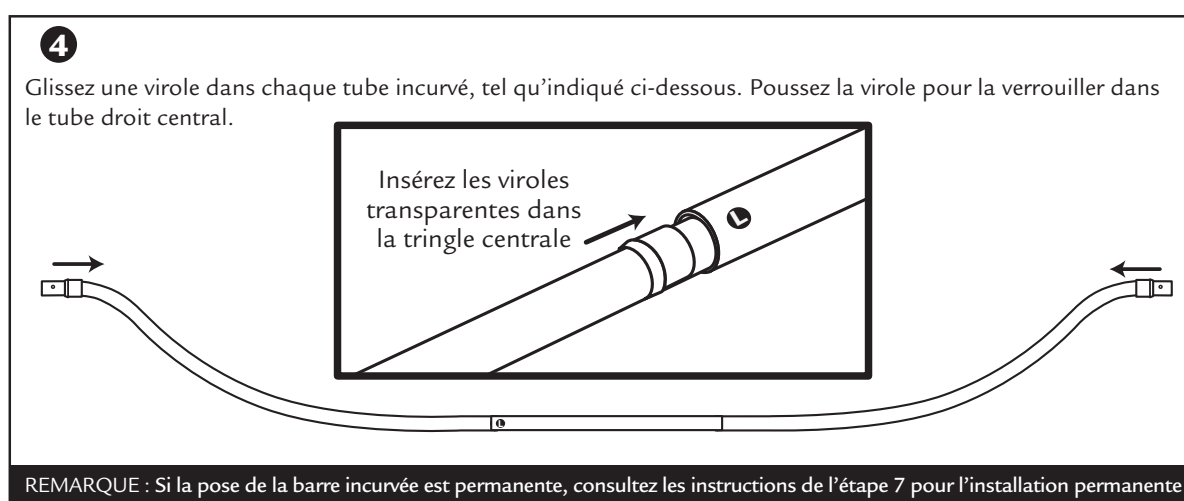
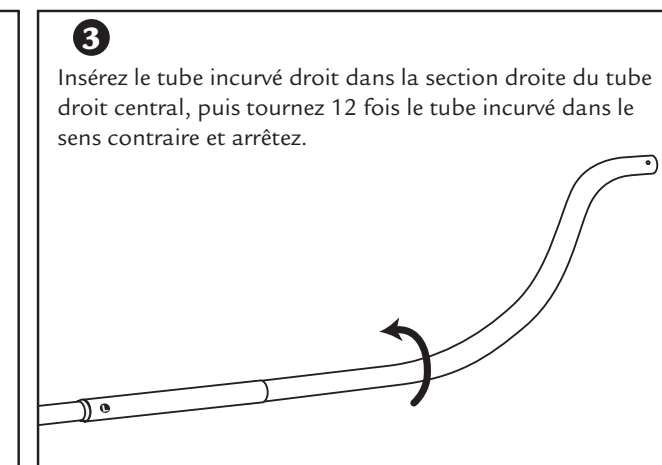
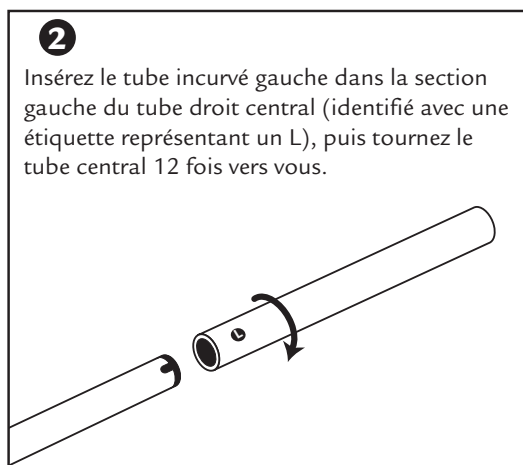
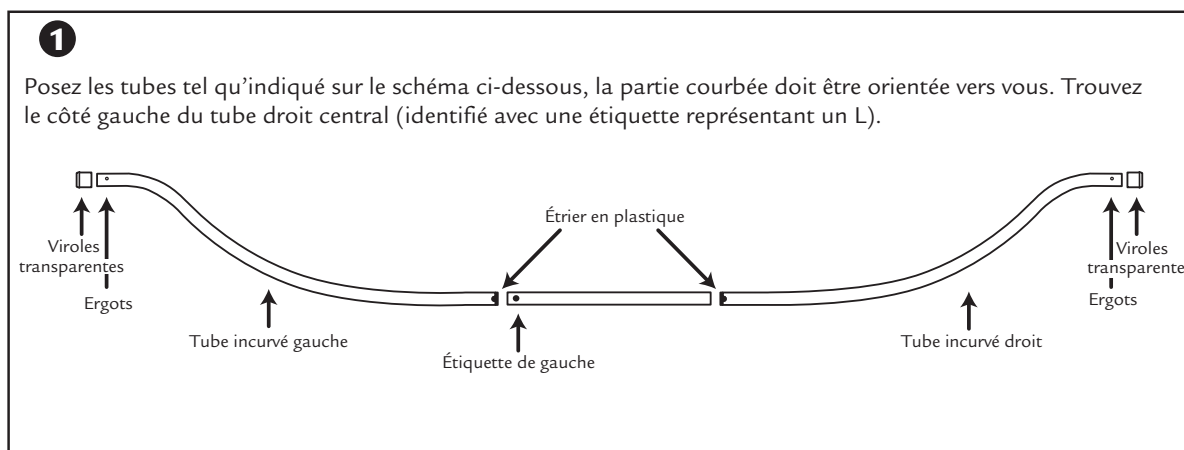
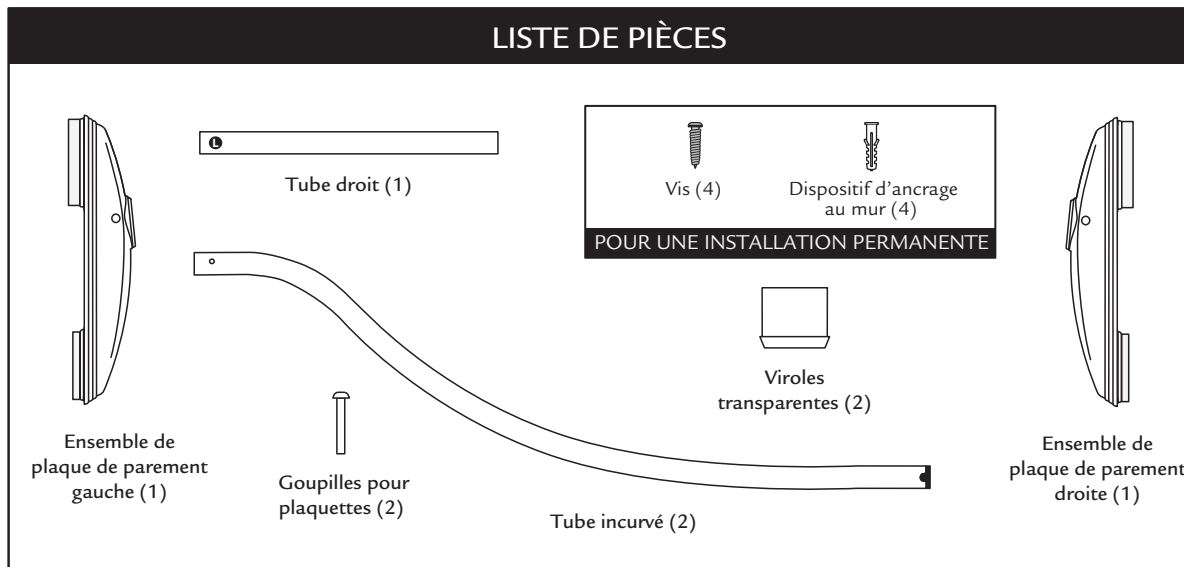




Instructions de montage sans outil d'une tringle de rideau de douche

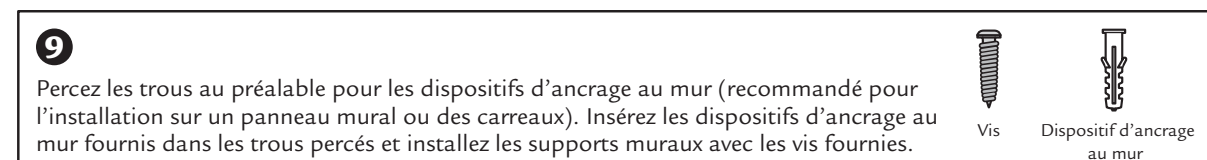
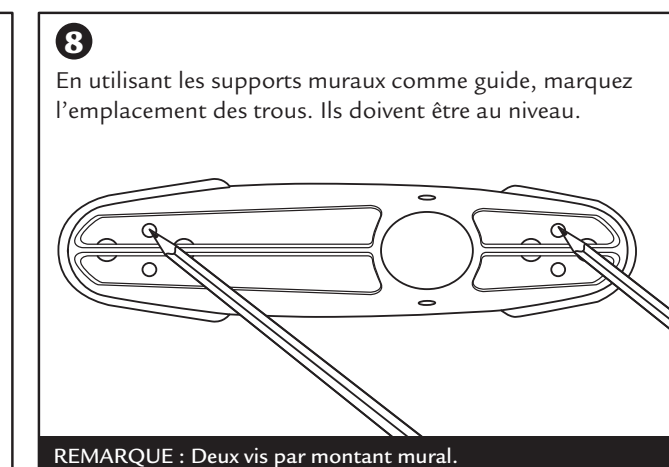
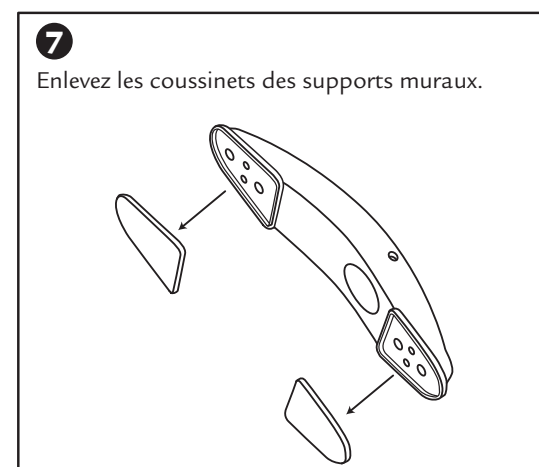
Instructions pour une installation facile :

- Cette tringle de douche s'adapte aux ouvertures de baignoire standards mesurant jusqu'à 66 po (167 cm)
- Identifier et examiner les pièces avant d'assembler
- Installez sur une surface propre et sèche
- Fermez le trou d'évacuation de la baignoire avant de procéder à l'installation pour éviter la perte de petites pièces

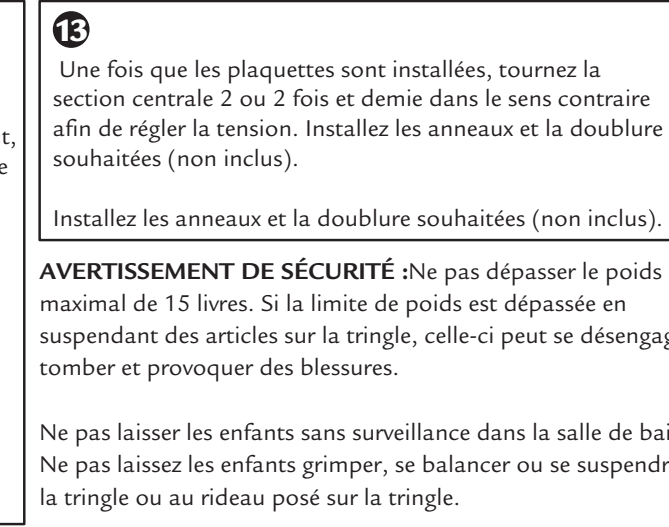
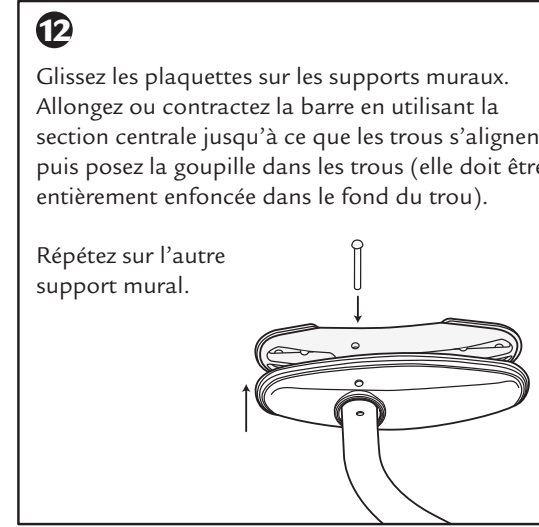
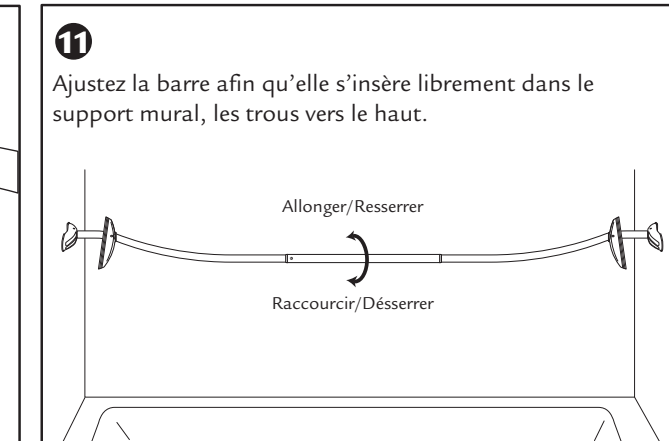
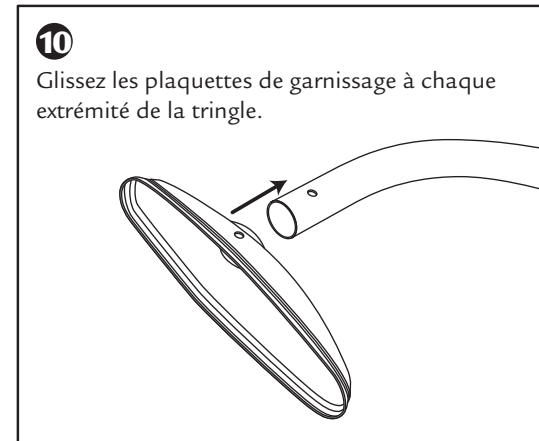


Option pour une installation permanente

REMARQUE : Suivez les instructions de montage sans outil d'une tringle incurvée pour l'installation d'une tringle jusqu'à la 4^e étape.



REMARQUE : Percez les trous avec une mèche de 6.35 mm. Si vous percez des carreaux, vous devez utiliser une mèche en carbure.



Kenney Manufacturing Company
1000 Jefferson Boulevard, Warwick, RI 02886 USA
www.kenney.com